



(Aim) Bridging to Circulation Society

Environment • Saving Energy • Recycling • Preventive Maintenance of Factory

Trading Company of Industrial Material & Equipment

SANWA CORPORATION CO., LTD

Preventive Maintenance & Reproduction of the Factory

1) Promotion of Preventive Maintenance

Automation, A person-saving pushes forward becoming it for the smooth driving maintenance and ensuring safety of the machine, review the quality of Paint, Water-proof and Heat-insulation and prevent the deterioration of Environment and Machine performance which is caused by Rust, Leak, Condensation etc.

2) Promotion of Efficiency and Energy-Saving

- ① Replacement of old-type hydraulic units to Inverter control device
- ② Introduction of large-size compressors intensively at the big plants
- ③ Implementation of Heat-proof and Heat-insulation painting at the roofs
- ④ Heat-proofing of warehouse roof film by Foaming mould materials
- ⑤ Construction of Heat-proof coating for Window glasses
- ⑥ Construction of prevention for the piping condensation at the Factory.

3) Improvement of Safety Environment

- ① Automatic Lubrication for Big Steel Construction Equipments at dangerous Place---Loading & Unloading equipments
- ② Prevention of hazardous substance scattering---Dust collector, Water Treatment facilities, VOC facilities
- ③ Prevention of hazardous substance flow and leak---FRP Water-proof coating, Improvement of soil quality investigation
- ④ HACCP construction of Kitchen---Special Painting for Anti-Bacteria and Anti-Mold.

4) Sanwa Brand Products

- ① Sanwa Thinner
- ② Sanwa Masso Rosin
- ③ Auto Valve with Control Device

5) Unique Technology

- ① Precision Distillation
- ② Hot Isostatic Pressing Process
- ③ Explosive Composite Material

NEW PRODUCT ...AUTO VALVE WITH CONTROL DEVICE

SANWA CORPORATION

PURPOSE: Improvement of Maintenance Work by Advance Setup & Unitization

NAME : AUTO VALVE WITH CONTROL DEVICE , Butterfly Valve of Wafer Type

SPEC. : 16K-50A, 65A, 80A, JIS 10K-100A, 150A, 450A

- CHARACTER:**
- ① VALVE & CYLINDER is made in Korea or Taiwan
Which have a Past Record for Steel Plant.
 - ② SOLENOID VALVE is made in Japan, which equipped
Bypass Function.
 - ③ All Parts Quality are guaranteed by each Maker by themselves.
After complete assembling in SANWA, we will check good
Quality of Formed Leak Test and arrange shipping delivery.



150A Butterfly Valve (before shipping)

GUM ROSIN

- ① **Characteristic :** Usually in Vietnam GUM rosin is made by Cambodian pine resin which is cheap price and low performance.
To improve performance of GUM ROSIN , we changed raw material To Taiwan red pine resin , which is mainly used in China Gum Rosin.
- ② **Function :** Adhesive, Interface Activation, ---Dispersion & Emulsification Emulsifier for Rubber Polymerization, Hydrophobic
- ③ **Use :** Papermaking Chemicals, ---Sizing Agent, Coating Agent, Paper Strength Agent, Printing Ink, Adhesive, Synthetic Rubber, Paint
- ④ **Manufacturing Plant :** Founded in VINH CITY at 1994. Employees is 250. Annual Output is 2,000—3,000Ton per one year.
- ⑤ **Sole Agent Contract :** Photo.1. : Raw material is Taiwan red pine resin
- ⑥ **Products Appearance :** Photo.2. : Yellowish brown transparent body

独占販売契約書 SOLE-AGENT CONTRACT

MAKER : VINHCONSHIP GROUP, VIETNAM
BAYER : SANWA CORPORATION, JAPAN

1. SCOPE : All Grade of GUM ROSIN, made by Massoniana In the world.
Usually VIETNAM GUM ROSIN is made by Merkusii
2. PRODUCTS NAME : ① SANWA MASSO ROSIN
②
③
3. VALID PERIOD :
From 20 MAY 2020 to 19 MAY 2021 ,
If there was no objection to each other, continues automatically

20 MAY. 2020

MAKER

NAME : VINHCONSHIP GROUP
ADDRESS : 249 LE DUAN ROAD, VINH CITY
NGHE AN PRO. SR VIET NAM

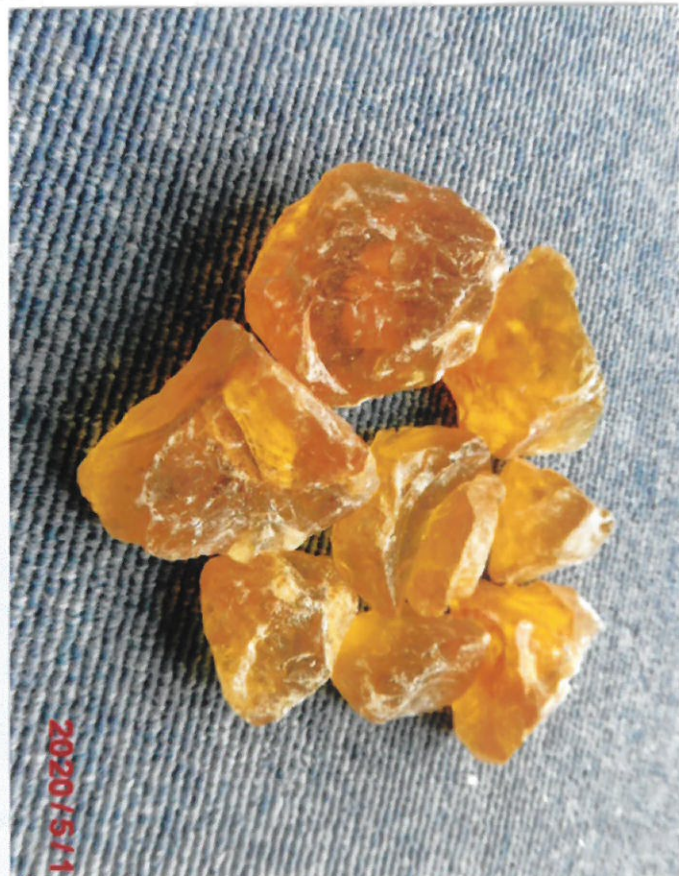
PRESIDENT
TỔNG GIÁM ĐỐC
Nguyễn Duy Kỳ

BAYER

NAME : SANWA CORPORATION
ADDRESS : 3-2 KOONAN 5-CHOME
NAKA-KU, HIROSHIMA,
PRESIDENT : TORU KAWAUCHI



Toru Kawachi



(Photo.2) SANWA Masso Rosin

← (Photo.1) Masso Rosin to the world

SANWA Thinner

	Code	Products	Main Component	Use	Outsource
Chemical Use	7020740	thinner TM	toluene+MIBK+etc.	surface disposal of rubber etc.	G Co.
	7020730	thinner TA	toluene+MEK+etc.		
	7010759	thinner TA(drum)	toluene+MEK+etc.		
	7010659	thinner TM(drum)	toluene+MIBK+etc.		
	7010769	※thinner AM	IPA+MCH+etc.		
	7010770	※thinner MK	MIBK+MCH+etc.		
Machine Building Materials Construction use	9220210	#10lacquer use	toluene+methanol+etc.	mechanical factory* building materials/ factory etc.	D Co.
	9220610	epoxy use	toluene+xylene+etc.		
	9220710	chlorinated rubber use	xylene+solveso+etc.		
	9220810	urethane use	xylene+toluene+etc.		
	9221210	wash use.N	toluene+methanol+etc.		
	7020780	mablack	toluene+xylene+etc.		
	7020790	urethane useU	toluene+xylene+etc.		
	7020800	adhesive use	acetic acid ethyl +acetone+etc.		
Wash use	7020770	wash use	toluene+methanol+etc.	regenerated products	D Co.
	7020810	lacquer wash use	toluene+methanol+etc.	low smell products	
	7020820	※PRTR-600 (Pollutant Release and Transfer Register)	MCH+methanol+etc.	low poison products	
	7020830	※HP lacquer thinner	denatured acetic acid methyl +methanol	low poison products	T Co.

1) We can adjust component according to customer's request.

2) Cost of our products are 20% less than special thinners of other paint maker.

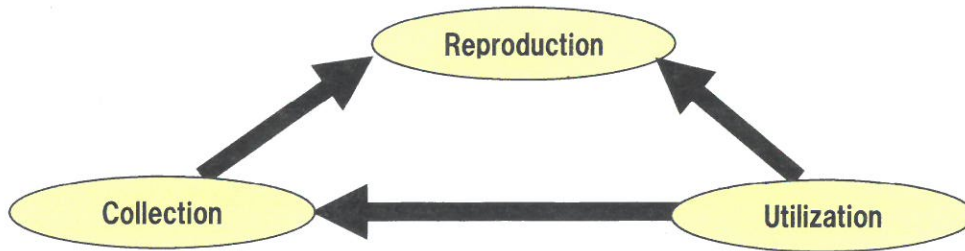
3) Thinner TA/TM(7010759-659) are sold with drum, others are sold with 18L can.

※ They are low poison products of PRTR Non-applicability (excluding toluene and xylene).

Recycling of Solvent and Plastic

Private Declaration ISO14001.

Our company will tackle the Environmental problems based on ISO14001 Standard System



Aim : Bridging to Circulation Society

Environmental Policy

1. Establish and utilize the environmental management system
2. Observe the law and agreement etc. to prevent the environmental pollution
3. Set the environmental object and target and review them periodically and implement the environmental improvement activity continuously.
4. Develop the environmental products, and procure the environmental materials and facilities.
5. Tackle the reduction of the wastes, recycling promotion, Resource-saving and Energy-Saving.
6. Notify the environmental policy to employees and customers and disclose it to the society.

Jun. 1962	Opened Shiga Branch (and consolidated to Head office in Feb, 2007)
Mar. 1970	Opened Yoshijima Office and Warehouse
Nov. 1972	Newly built Head office at 1-4-10 Chiyoda-cho, Nakaku, Hiroshima city
Apr. 1973	Opened Osaka office
Feb. 1975	Opened Kyushu Branch
Dec. 1978	Approved as Constructor (engaging in Paint work)
Mar. 1981	Opened Sanin Sales office (Closed Dec.2010)
May. 1981	Opened Tokyo office(Closed Dec, 2006)
Jul. 1989	Newly built Sanin Sales office
Nov. 1992	Newly built Head office at 5-3-2, Kounan, Nakaku, Hiroshima city for business expansion and integrated Yoshijima office into Head office.
Jun. 1998	Obtained the approval of Construction Minister as General constructor
Mar. 2011	Approval of Construction Minister as General constructor by Hiroshima Prefectural Governor
Sep. 2011	Work Dept. closed

**12. Numbers of Qualified
Company Members**

Members for one type of Dangerous object handler.....	1 person
Members for another type of Dangerous object handler.....	5 persons
Chief member for Organic Solvent handling	2 persons
Chief member for Specified Chemical substances handling	1 person
Members for Poisonous & Deleterious substances handling	2 persons
Members for Heat control	1 person
Members for Working Environment Measuring	1 person
Hydraulic System Adjustment Technician Level 2.....	2 persons
Technical Certification Pass Certificate 2 nd Grade Finish.....	1 Person

Outline of our Company

1. **Company Name** SANWA CORPORATION
2. **Foundation** 01 AUG. 1953
3. **Establishment** 30 JAN. 1958
4. **Company Business**
 1. Sales of Paint and Paint Materials
 2. Sales of Chemical Products
 3. Sales of Machine Equipment
 4. Agent of Industrial Products
 5. Agent of the insurance against loss
 6. Manufacturing of Paint and Thinner
 7. Warehouse Business
 8. Design, Administration, Supervision and Works of Civil Engineering & Construction
 9. Export and Import Business
 10. Agent of Worker Dispatch
 11. All business accompanying these
5. **Trading Business** with China, Korea, Taiwan, India, Italy, Germany, America etc.
6. **Capital** JPY27,000,000.
7. **Financial Year End** End of March
8. **Main Bank** Hiroshima Bank (Otemachi Branch)
The Bank of Mitsubishi UFJ Ltd (Hiroshima Branch)
9. **Registration of Construction** Approval of Hiroshima Prefectural Governor.(No.27-35678)
Painting, Water Proof, Mechanical Equipment Installation,
10. **Other Qualification** Registration of Sales for Poisonous & Deleterious substances
(Registration No. 1434)
Registration of Export & Import code (Code No. 73797)
Registration of Export & Import Company for Drug materials
etc. (Hiroshima 52-19)
11. **Company's History**

Aug. 1953	Established Sanwa Shoukai at 100, Kokutaiji, Hiroshima-city
May. 1957	Newly set up the office at 1-4-10, Sendamachi, Nakaku, Hisohima City for business expansion
Jan. 1958	Reorganized as Sanwa Corporation and Mr. Yuso Inoue assumed office as President and took over all the business operation
Apr. 1960	Set up Field work Dept.

Chemical Products

		Item	Products	Maker
Paint Products Raw Materials	Solvent	aromatic compound	toluene,xylene	IdemitsukKosan Co., Ltd. JFE chemical Corporation
		alcohol	methanol,isopropyl alcohol	Tokuyama Corporation
		ketone	acetone,methyl ethyl ketone	Mitsubishi Chemical Corporation
		ester	acetic acid ethyl,solfit	KURARAY Co., Ltd. Godo Co., Ltd.
		etc.		Daishin Chemical Co., Ltd. Taiyokagaku Co., Ltd.
	Synthetic Resin	functional resin	silicone resin	Shinetsu Chemical Co., Ltd.
		epoxy resin	epoxy resin	Ohtake-Meishin Chemical, Co., Ltd. Mitsui Chemicals Polyurethanes, Inc.
		olefin resin	polyethylene,polyamide	Nihon Polyethylene Co., Ltd.
			thermoplastic resin of polycarbonate etc.	Mitsubishi Engineering-Plastics Corporation
		adhesive	many adhesive	Konishi Co., Ltd. Cemedine Co., Ltd. Henkel Japan Ltd., Tokyo
Pigment		hot melt adhesive	Hitachi Kasei Polymer Co., Ltd. Yasuhara Chemical Co., Ltd.	
	water resin	acrylic emulsion	Koatsu Gas Kogyo Co., Ltd. BASF Japan Ltd.	
	extender	calcium carbonate,talc	Nittou Funka Kogyo K.K.	
Medicine	white pigment	titanium oxide,zinc white	Sakai Chemical Industry Co., Ltd. The Honjo Chemical Corporation	
	colored pigment	iron oxide red,chrome yellow	Dainichiseika Color & Chemicals Mfg. Co., Ltd. Toda Kogyo CORP. Rockwood(Italy)	
Paint	Algae-control	DCOIT	Qufu Chenguang chemical Co.,Ltd.	
	Anti-Mold, Sterilization	CYBUTRYNE, CMIT		
Container	building materials,ship		Chugoku Marine Paints Ltd.	
	general use,industry		Mizutani Paint Co., Ltd. ABC Trading Co., Ltd.	
	steel container	drum,18Lcan, large can with a handle	Japan Pail Corporation JFE Container Co., Ltd. Honshu Seikan Co., Ltd. Nagaoseikan Co., Ltd.	
Recycled Products	plastics container	palstics container,palette	SANKO Co., Ltd.	
	solvent	isopropyl alcohol,acetone acetic acid ethyl, many regenerated solvent	Japan Chemical Research Co., Ltd. Nippon Refine Co., Ltd.	
	plastics	PP,PE,PS,ABS,PET,PS thermoplastic resin of polycarbonate etc.	Isono Co., Ltd. Tsukuba Chemical Co., Ltd. Clean-Giken Co., Ltd. RHOMBIC Coporation	
Manufacturing Consignment	formed processing of plastics	FRP molding	Enukeikurafuto Co., Ltd.	
	precise distillation	oldershaw type rectifying column unit	Japan Chemical Research Co., Ltd.	

VOC Control Device

SANWA CO.

Type	Character
Rotary Accumulate Burning Type * Draw.	<ol style="list-style-type: none"> Honeycomb Ceramics—big surface porous area, heat resistance and chemical stability will be used effectively for Adsorption VOC and Accumulate energy character. Adsorption of Volatile Organic Compounds (VOC) gas at room Temp. ~ Vaporization at 180°C. ~ Burning Separate to CO₂ & H₂O , at 800-950°C and Accumulate. At the start up of operation, you have to use Gas Burner about 100minutes, and almost of operation term you can stop burner , because of Burning Energy can reuse for Vaporization by Accumulate character.
Active Carbon (Fluidized Bed)	<ol style="list-style-type: none"> High strength granular Active Carbon can use in fluidized condition. This means almost surface area of carbon can use effectively. Solvent will recovered 10kg/Hr , in the case of 900N m³/min. How to handle Recovered Solvent is another new problem. Granular Active Carbon is made by KUREHA's Patent.
Active Carbon (Fixed Bed)	<ol style="list-style-type: none"> VOC gas will pass easy route in Carbon grain mass. This means a little surface of Active Carbon grain is effective and almost is ineffective. Usual Active Carbon will be smashed easily, so that can't use in Fluidized Condition. It needs big type of a Drainage Disposal Equipment, very expansive.

* Rotary Accumulate Burning Type

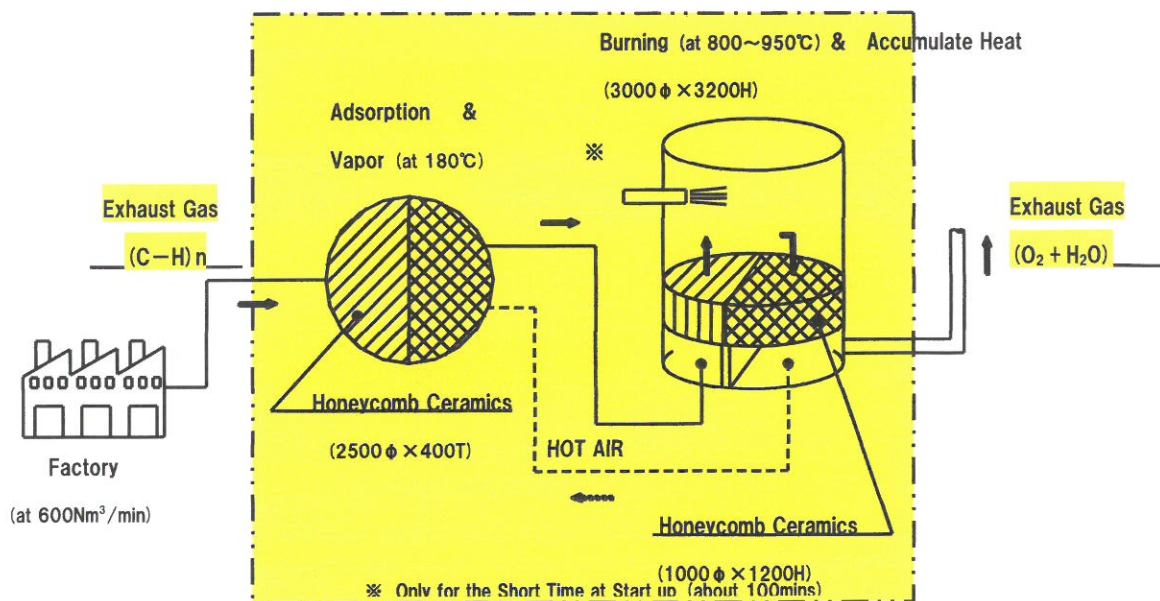


Fig. VOC Control Device

Machinery Products

	Item	Product	Maker
Device	Carrier	Carrying cart, Heat-proof hoist, Material handling facilities	Taiyo Ltd. Seiden Co., Ltd.
	Buffer	Various buffer, Diaphragm pump etc. Various buffer etc.	Taiyo Ltd. Taiyo International Corporation
	Lubrication	Oil supply device, Lubrication device etc.	Daikin Lubrication Products & Engineering Co., Ltd.
	Air-Conditioner Oil Cooler	Carb-cooler, Air-cooled chiller etc. Compressor Lubrication Cystem	Daikin Applied Systems Co. Ltd. Hitachi Plant Technologies Ltd.
Parts	Hydraulic & Air Pressure	Cylinder, Valve, Hydraulic unit Eco & Energy saving Hydraulic unit etc.	Taiyo Ltd. SECO(Korea) Daikin Hydraulic Engineering Co., Ltd.
	Lubrication	Distribution valve, Piping Joint, Oil supply device for Gear etc.	Daikin Lubrication Products & Engineering Co., Ltd.
	Roll	Centrifugal casting hoarse roll, Heat-proof roll etc. Rolls for hot & cold rolling machines etc. Polyurethane lining roll etc. Conveyer roll etc.	MYSCO(Korea) Hitachi Kyowa Engineering Co., Ltd. Oates Chemical Co., Ltd. Sanwa Co., Ltd.
	Pump	Vertical Shaft pump Centrifugal pump, Mixed flow pump	Kubota Co., Ltd
	Power Transmission	Geared Motor, Gear, Jack etc. Decelerator Universal Joint, Ball Joint etc. Screw Jack, Ball Jack etc.	Nissei Corporation Nippon Gear Co., Ltd. Mitsubishi Heavy Indsutries Co.,Ltd. Taiyo Koki Co., Ltd. Unitec Industry Co., Ltd.
	Valve	Butterfly valve JIS valve etc. Ventilation valve, Large valve, Malleable valve etc. Various Stainless valve	Tomoe Valve Co., Ltd. Bingo Valve Co., Ltd. Hirose valve Co.,Ltd Kubota Co., Ltd. Hitachi Metals, Ltd. SICO (Korea) PAN CHECK(Korea) Dairen Tanzou valve Co., Ltd.(China)
	Filter	Oil filter, 6-way valve etc Steam & Oil air trap etc.	Taiyo Techno Ltd. TLV Co., Ltd.
Outsourced Production	Precise Casting	Casting Nozzle etc.	Showa Manufacturing Co., Ltd. Hitachi Metals Precision, Ltd.
	Forging	Big Forging by 8000, 5000T Free Press	MYSCO CO. (Korea) Teramoto Iron Works Co.,Ltd.
	Cast Steel	Bend pipe etc. Turbine high pressure room etc.	Ozuki Steel Industries Co., Ltd. Dalian Heavy Mach.(China)
	Can Products	Turbine low pressure room etc. Stainless tank, Pressure container, Large sized tank	Dailian Heavy Mach.(China) JINZHOU HEAVY MACH.(China)
	Special Machining	Large screw processing	Gosho Screw Co., Ltd.
	Process, Assembly	Tire machine accessories parts Winch for vessels	Dalian Huari Machine & Mould Co.,Ltd. Dalian Shipyard (China)
	Cladding Materials	Clad steel(Cu/SS, Al/SS, SUS/SS etc.)	Dalian Shipyard, Explosive Factory (China)
Design & Manufacturing	Power Cylinder, Slitter, Winding device etc. Dangerous substances storage tank etc. Stainless tank, Pressure Vessel etc.	Unitec Industry Co., Ltd. MHI Machinery Technology Coporation JINZHOU HEAVY MACH.(China) DAEHEUNG(Korea)	

Civil Engineering & Construction Materials

Civil Engineering works materials		
Item	Products	Maker
Water stoppage & prevention	Water stoppage plate	Aoi Chemical Inc.
Artificial Walkway	Urethane elastic rubber paving materials	ABC Trading Co., Ltd.
Civil Works Filing Materials	Filing Materials and Plate	Aoi Chemical Inc.
Water Pipe	Pipe chloride	Totaku Industries, Inc. Mitsubishi Plastics, Inc.
Construction Materials		
Paint	Dual corrosion-proof paint and Underwater hardening paint Dust-proof, Corrosion-proof Floor finishing materials MMA floor painting materials	Chugoku Marine Paints, Ltd. ABC Trading Co., Ltd. Mizutani Paint Co., Ltd. Mitsui Kagaku Sanshi Co., Ltd.
Exterior Materials	Exterior painting Exterior coating	SK Kaken Co., Ltd. Kikusui Chemical Industries Co., Ltd. Suzuka Fine Co., Ltd.
Heat Insulation Materials	Foaming Urethane Grass-lawn wool Heat Insulation	ABC Trading Co., Ltd. Asahi Fiber Glass Co., Ltd.
Water-Proof Materials	Water-proof materials for Sheets Water-proof materials for Painting film	Architectural Yamade Corporation Toyo Tire & Rubber Co., Ltd. ABC Trading Co., Ltd. Nihon Tokushu Toryo Co., Ltd.
Sealing Materials	Urethane, Acrylic, Silicon Denatured Silicon Section repair materials, Urethane adhesive Silicon, Sealant	Sanstar Engineering Inc. The Yokohama Rubber MB Japan Konishi Co., Ltd Shinetsu Chemical Co., Ltd.
Interior Materials	Partition Toilet and Shower booth System Ceiling Slip-prevention vinyl floor sheet Plastic floor materials	Banpo Industries, Ltd. Banpo Industries, Ltd. Asahi Fiber Glass Co., Ltd. Takiron Co., Ltd. TOLI Corporation Hitachi Construction Machinery Co., Ltd. Naka Corporation
Others	Taking-out of Ceiling light Joint wire, Fence	AGC glass Kenzai Co., Ltd. Nippon Polyester Co., Ltd. Chinese products

Works

(Approved by Hiroshima Prefectural Governor No. 27-35678)

Paint & Water Proof

- Regular outside painting
- Interior painting
- Roof Water-proof (Sheet, FRP Film, Asphalt)
- Sealing works
- Outside wall repairs (Section repairs, Plastic Injection)
- Waterweed-prevention painting for Overhead Water tank
- Rust-proof, Anti-bacteria (HACCP)
- Unit bath refreshment works
- Corrosion-proof by Melting injection, Heat-proof & Heat-insulation painting, Optical catalytic oxidized Titanium coating

Plant Painting

- Outside & Inside dual corrosion-proof work for oiltank (KHK)
- Water-resistant inside painting for pier steel pipe
- Dolphin Repair work
- Rain water prevention works
- Tank corrosion-proof for Sewage service agency and Agricultural Group

Earthquake-proof Reinforcement Concrete coating Floor Painting

- Reinforcement works for Concrete floor Piers
- Melting injection of Aluminum zinc, RC Guard
- Plastic finishing (Epoxy, Urethane, Polyester, MMA)
- Inorganic floor finishing (Hard, Water)

Slim layer Paving

- Rubber chip elastic paving
- Artificial turves with sand (Tennis court)
- Slip prevention paving

Scaffold and Civil Works Interior Works

- Scaffolding construction (Frame scaffolding, Steel Piping scaffolding, Rolling tower)
- Free access floor works (Aluminum Diecasting, Plastic, Steel)
- Sound-proof and Heat insulation (Grasswool and Urethane coating)
- Partition and Toilet booth works

Asbestos Measure Works

- Containing method, Enclosing method, Removal works

Machinery Equipments

- Design & works for Hydraulic pressure, Air pressure, Central lubrication device

Installation Works

- Design & Manufacturing for various kinds of test equipments (Equipments for Waste plastic oil collection and Catalyst evaluation)
- Installation works for office and industrial air conditioner
- Replacement works of activated carbon for Water filtering plant Sewage disposal plant

Environmental & Energy-Saving Products.....

	Item	Usage	Specification	Maker
Chemical	Recycling Solvent	Painting use SANSOLVE	Ordershow precise distillation device IPA, Acetone	Daishin, Godo Nippon Refine, Japan Chemical Reserch
	Recycling Plastic	Pallet Manhole cover	Full container materials PP Plastic container materials, PP, PE	SANKO, Isono, Tsukuba Chemical
	Vibration-Prevention Sound-Proof	Railroad car, Ventilation fan Special vehicle driver room	Light-weight and flexible 10-20 dB Deductible	Toshin Mitsubishi gas chemical
	Heat-Proof Mold Film Materials	Livestock barn	Hard polyurethane + Moisture-proof or Polyethylene Coating 910W X 1820L X 40~50T	Kurashiki Bouseki Toyo Tires & Rubber
	Activated Carbon	Water and Sewage disposal plant	Deodorizing use(4.75-3.35mm) Dioxin absorbing use(45um)	Asahi Rokazai
	Oil Absorbent	Measure for Leaking accident	All-round type(Oil, Acid, Alkali, Solvent) Oil type(Oil)	Chugoku Kogyo
Chemical & Machinery	Organic Solvent Disposal Device(VOC)	Paint production Printing plant	Concentrated catalyst, Heat storage type Fluid layer absorbing type	Kondoh Industries Kureha Eng
	Waste Water Treatment Facility	Plating, Paint plant Special chemical production plant		Kubota Kasui NSI
	Cleaning Device	Machinery parts	Carbonized Hydrogen : Distillation recycling WaterWastewater treatment facility	Daiwa Tokushu Aqua Tech
	Machinery	Eco-Rich Hydraulic Device	Machining plant	Invertor control(0.75-11kw)
Mist-Eliminator		Compressor High speed rotator for Turbine etc.	Measure against oil mist in the exhaust air comes out of lubricating oil	Taiyo Techno Hitachi Plant Techno
Paint & Works	Heat Insulation & Heat-Proof Paint, Film	Building roof & Tank Crane driver room & Glass	Reducing of 10-15 degrees for Roof surface temperature Reducing of 2-3 degrees for window glass	SK Kaken, Skechi Three M
	Optical Catalyst & Titanium Coating	Building window glass	Effect for Rust-proof, Weed-prevention	Ishihara Sangyo
	Dirt-Prevention Fluorine Paint	Building external wall	Matching to water, Easy to remove the dirt Effect for Rust-proof, Weed-prevention	SK Kaken, Suzuka Fine
	Non-Solvent Powder Paint	Machinery for Construction, Agriculture, Industry Machine Tool Operator control panel	Condition of Baking Coating, Low temperature type 160°C x 20 minutes	Chugoku Marine Paints
	Rust stabilization Paint	Factory preservation	One pack type water-soluble	SAN-AI Oil CO.,Ltd.

Valve Products

Maker	Details	Specification
SUNGIL(Korea)	Stainless Ball valve, Butterfly valve, Gate valve Glove valve 15A-450A AUTO VALVE WITH CONTROL DEVICE	JIS Standard, 10k & 20k, API authorization, Flange type Manual, Electric, Air-pressure, Oxidation- proof chemical liquid use, Water supply device pipeline for high-rise building
WOOSONG(Korea)	Stainless Chuck valve Wafer type, Twist type Swing type 15A-600A	JIS Standard, 20K-50A Water supply device pipeline for high-rise building
Kubota	Butterfly valve, Partition valve, Blow-off valve Soft seal partition valve Internal screw type, External Screw type	Manual, Electric, Earthquake-proof, Heat-proof, High airtightness Water & Sewage, Steel, Oil, Electricity use
Bingo	Vessel valve (Corrosion-proof)	Bronze globe valve 5K-20K 6A-65A Cast iron angle valve 5K-16K 50A-400A Cast steel valve 5K-40K 50A-400A
HILTEC(Japan)	6 or 3 Directional Switch Valve	conform to API614, Double Head Filter Unit Diameter 1-1/2"----12" Flange ASME#150---#300
Hirose	Stop valve, Ball valve, Relief valve Check valve, Electromagnetic stop valve Throttle valve, Overflow breaker	High Pressure Hydraulic Valve
Dalian Forging (China)	Casting Gate valve, Glove valve	API. LR•ASME authorization Oil-Chemical plant use
Tomoe	Triple biased center process valve, High performance valve, Rotary control valve, plastic lining valve, Rubber sheet valve, butterfly valve etc.	Applied to High temperature & High pressure - extreme low temperature Domestic No.1 market share for Butterfly valve

Packing Materials and Device

	Name	Specification	Maker
Container	Can	18L Square type	Honshu Seikan Co., Ltd.
		18-20L Pail can	Japan Pail Co., Ltd. Nagao Seikansho Co., Ltd
		Drum	JFE container
		Plastic pail, Drum	Sanko Co., Ltd.
	Container Bag	PP cloth bag(500kg-1000kg)	Hagihara Kogyou Co., Ltd. Morishita Inc.
	Container Box	Plastic box(with adjustable dimension)	Miyajima Co., Ltd. Kyouanshikou Co., Ltd.
		Plastic container	SANKO Co., Ltd.
	Pallet	Plastic	SANKO co., Ltd. Tsukuba Chemical Co., Ltd.
IBC Tank (UN Standard products)	Large Gravity, Max. permissible gravity2.0 Max. Weight 2,000kg	Kinshu Jyukei	
Buffer	Molding Products	Plastic, Foaming	Miyajima Co., Ltd. Kyouanshikou Co., Ltd.
		Uncrosslinked Polyethylene	JSP Co., Ltd. Toyo Cork Co., Ltd.
		Polyester Foamed molding	
	Film (12-20um)	Stretch, Film, Polyethylene Foaming Buffer	Ube Film Co., Ltd. JSP Co., Ltd.
	Sheet (1-2mmt)	Uncrosslinked PE sheet	JSP Co., Ltd.
Plate Molding Materials (3mmt x 1000 x 2000)	Plastic, Recycle PP, Door protection materials	Miyajima Co., Ltd.	
Related product	Stretch Film Packing machine	Automatic	Tsukasa Chemical Co., Ltd.
		Manual	Osaka Taiyu Co., Ltd
	Balancer	Applied to 40-1,000kg	Taiyo Ltd.

Main Supplier

Mitsubishi Co., Ltd.
Mitsubishi Shoji Chemical Co., Ltd
Chugoku Marine Paints Ltd.
Mitsubishi Chemical Co., Ltd.
ENEOS Corporation
Mitsubishi Gas Chemical corporation ,Inc.
Japan Pail Corporation
Idemitsu Sekiyu Kagaku Co., Ltd.
Shinetsu Chemical Co., Ltd.
Gunze Co., Ltd.
Mitsui & Co., Ltd.
Mitsui Chemicals, Inc.
Asahi Rokazai Co., Ltd.
Toda Kogyo Corp.
Adeka Co., Ltd.
DIC Corporation
Harima Chemicals, Inc.
Ito Oil Chemicals Co., Ltd.
Dainichiseika Color & Chemicals Mfg. Co., Ltd.
Osaka Organic Chemical Industry Ltd.
Asahi Fiberglass Co., Ltd.
The Honjo Chemical Corporation.
JFE Container Co., Ltd.
Nitto Funka Kougyo K.K.
Tokuyama Co., Ltd.
Nichinen Co., Ltd.
Toso Co., Ltd.
Fuyo Chemical Industries Co., Ltd.
Nihon Polyethylene Co., Ltd.
Japan chemical research Co., Ltd.
Cemedine Co., Ltd.
DAISHIN CHEMICAL CO., LTD.
Godo Co., Ltd.
Taiyo Chemical CO., LTD.
Nihon Matai Co., Ltd.
Sumitomo Corporation (Italy)
Honshu Seikan Co., Ltd.
Japan Alcohol Trading Co., Ltd.

Taiyo, Ltd.
Daikin Hydraulic Engineering Co., Ltd.
Daikin Lubrication Products & Engineering Co., Ltd.
Daikin Applied Systems Co., Ltd.
Taiyo Engineering Co., Ltd.
Henkel Japan
Kuroki Kogyosho Co., Ltd.
HILTEC Ltd.
Kubota Corporation
Nissei Corporation
Taiyo Kouki Co., Ltd.
TLV Co., Ltd.
MARUMA TECHNICA CO., LTD.
Dalian Machine Tool (China)
Dalian JINZHOU Heavy Mach.(China)
Dalian Heavy Machinery Plant. (China)
CYSCO Co., Ltd.(Korea)
NARA Co., Ltd.(Korea)
WOOSUNG VALVE Co.,Ltd.(Korea)
DAEHEUNG COOLER Co., Ltd.(Korea)
SUNG- IL VALVE Ind.Co.Ltd.(Korea)
JUFAN INDUSTRIAL (TAIWAN)
VICOSHIP(VIETNAM)
Jiangsu Yuxing Industry&Trade Co., Ltd.
Quhu Chenguang chemical Co., Ltd.(China Shanghai)
Wuzhou Sun Shine Forestry&Chemicals Co., Ltd. Of Guangxi
Qingdao Double-Peach Specialty Chemicals(Group) Co., ltd
Dalian CMEI Co. (China)
ABC Trading Co., Ltd.
Kyushu Toryo Co., Ltd.
Nihon Tokushu Toryo Co., Ltd.
Kikusui Chemical Industries Co., Ltd.
Mizutani Paint Co., Ltd.
Sanstar Engineering Inc.
Konishi Co., Ltd.
SK Kaken Co., Ltd.
Ohtsuka Brush Mfg. Co., Ltd.
ARCHITECTURAL YAMADE Corporation

Main Customers

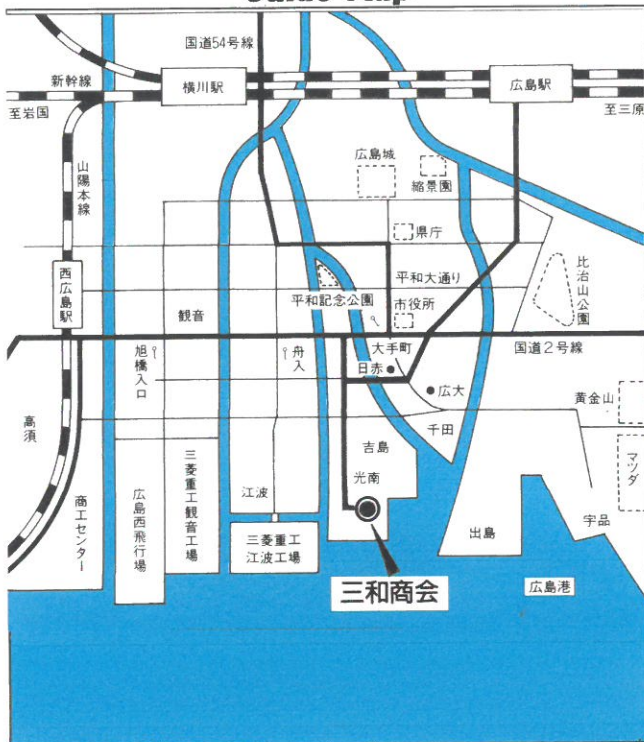
Chugoku Marine Paints, Ltd.
Ohtake-Meishin Chemical, Co., Ltd.
Kobe Paint Co., Ltd.
MHI Commercial Aviation Systems
MHI Machine Tool Co., Ltd.
Mitsubishi Heavy Industries, Ltd. (Shimonoseki)
Primetals Technologies Japan
MHI Compressor corporation
MHI Machinery Technology corporation
Mitsubishi Hitachi Power Systems, Ltd.
MHI Machinery Systems, Ltd.
MHI Plant corporation
Sumitomo Heavy Industries Material Handling Systems Co., Ltd.
The Japan Steel Works, Ltd.
Nikko Techno Corporation
Nippon Paper Industries Co., Ltd.
UBE MACHINERY CORPORATION, LTD.
Teral Inc.
IHI Transport Machinery Co., Ltd.
Nippon Steel Corporation
Kobe steel Ltd.
OJI ENGINEERING CO., LTD.
JFE Shoji Corporation
POSCO Steel Co. (Korea)
JSW Steel Co. (India)
Toyo Kohan Co., Ltd.
Mazda Motor Corporation (Technical Research Institute)
Satake Corporation
Kobelco Construction Machinery Co., Ltd.
Shin Meywa Industries, Ltd.
Chugoku Kogyo Co., Ltd.
Hokoku Kogyo Co., Ltd.
ITOCHU ENEX Co., Ltd.
Aoi Chemical Inc.
SANKO Co., Ltd.
Itoh Oil Chemicals Co., Ltd.
SHINKAWA Sensor Technology, Inc.
The Honjo Chemical Corporation
Hiroshima City
Miyako Kagaku Co., Ltd.
Toda Kogyo CORP.
Toso Co., Ltd.
Chugoku Electric Manufacturing Company, Incorporated
Molten Corporation
Hitachi Kasei Polymer Co., Ltd.
Yasuhara Chemical Co., Ltd.
The Sailor Pen Co., Ltd.
Tokuyama Corporation
Nishikawa Rubber Co., Ltd.
Nichiman Rubber Tech Co., Ltd.
Sanwa Shutter Corporation
UBE FILM, LTD.
Seven Rivers Co., Ltd.
Daiki Axis Co., Ltd.
Nippon Paint Co., Ltd.
CHUGOKU KOGYO CO., LTD.
Wood One Co., Ltd.
J-POWER Generation Service Co., Ltd.
Japan Marine United Corporation
MAZDA Ace Co., Ltd.
Kaneka Corporation
TOHO CO., LTD.
Tsukuba Chemical Co., LTD
Bridgestone Diversified Chemical Products Co., Ltd.
JGSDF Camp Yonago
Wakunaga Pharmaceutical Co., Ltd.
Kumagai Gumi Co., Ltd.
Toda Corporation
Kashiwabara Corporation
Hiroshima Rapid Transit Co., Ltd.
Token Corporation
Nagasaki Inc.
P.S. Mitsubishi Construction Co., Ltd.
HIROSHIMA GAS Co., Ltd.
HIROSHIMA GAS PROPANE Co., Ltd.
Okumura Corporation
PENTA-OCEAN Dredging Co., Ltd.
Nisshin Seifun Co., Ltd.
PENTA-OCEAN Construction Co., Ltd.
MEISEI INDUSTRIAL CO., LTD.

Hiroshima Office

3-2, Koonan 5-chome, Naka-ku, Hiroshima, 730-0825

Home Page <http://www.sanwacorp.com>

Guide Map



General Dept.

TEL 082-245-0575
FAX 082-249-4660, 4650
kawauchi@sanwacorp.com
somu@sanwacorp.com

Sales Dept.

Chemical Dept.

FAX 082-249-4650
TEL 082-245-2778

kaseihin@sanwacorp.com

Machine Dept.

TEL 082-245-0575

kikai@sanwacorp.com

Transportation

About 30 minutes from Hiroshima station by bus (bound for Yoshijima Eigyouso) and 5 minutes walk after getting off at Minamiyoshijima.

About 20 minutes from Hiroshima Station by Taxi
Get off at in front of Yoshijima Okunai Pool or the building of "SEINO UNYU"